

27.58.502.066

BPW Trailer Axle NHZF 9010-15 ECO Plus 2



L (form closure (square))

Brake SN 3020

for ABS, with sensors

Track 1830 mm, spring seat centre 980 mm, booster bracket centre 237 mm

for diaphragm cylinder, AGS ECO-Master, lever length (HL) 120 - 165 / 250

max. connection type 30, lever length (HL) 165

welded on booster brackets rear

Brake drums 260 mm wide

Wheel connection 175.8 / 225 / 10

Wheel studs M 22 x 1.5

without wheel nuts

No.	Name	Code number	Dimension	Quantity
10	Axle beam assembly	11.11.111110	only upon request	1
23	Plate	03.281.42.03.0		1
25	Centering frame	03.295.46.21.0	72,5 x 60 x 8	2
28	Support bearing plate	03.285.54.16.0		2
190	Booster bracket	03.182.35.80.0		2
209	Repair kit low-maintenance brake camshaft bearing item 210, 214, 220, 221, 225, 227, 230, 232, 245, 271, 272	09.801.06.09.2	with 03.229.02.18.0 / 03.229.02.19.0, for brake camshaft with 3 or 4 as last digit of code number	1
210	Bush	03.112.44.34.0	Ø 42 / 46 x 72,6	2
214	Grease nipple	02.6802.03.50	AM 10 x 1	2
215	Cover	02.3505.20.00		6
220	Bearing box for brake camshaft with 3 or 4 as last digit of code number	03.229.02.18.0		2
221	Bearing box, for grease nipple for brake camshaft with 3 or 4 as last digit of code number	03.229.02.19.0		2
225	Spherical bearing for brake camshaft with 3 or 4 as last digit of code number	03.113.14.04.0	Ø 42 / 60 x 38	2
227	Grease nipple	02.6802.14.50	AM 8 x 1	2
230	Screw assembly incl. item 232	05.865.00.02.0	M 8 x 30 - 8.8 / SW 13	8
232	Lock nut	02.5273.49.88	M 8 - 8 / SW 13	8
240	Brake camshaft	05.097.60.05.4	557,5 / 682	1
241	Brake camshaft	05.097.60.06.4	557,5 / 682	1
245	Assembly kit item 250 - 262, 268, 270, 274	09.801.08.86.0		2
250	Locking ring	02.5676.01.00	A 42 x 2,5	2
254	Ring	03.310.81.02.0	Ø 42,1 / 45,9 x 4	2
255	O-ring	02.5677.37.42	Ø 37 x 2.6 (black)	2
256	O-ring	02.5679.23.00	Ø 40 x 2.5 (green)	2
258	Sealing ring	03.120.42.02.0	Ø 42 / 56 x 2/4	2
260	Bush for brake camshaft with 3 or 4 as last digit of code number	03.113.03.06.0	Ø 37,4 / 45 x 21,3	2
262	Washer	03.320.11.16.1	Ø 22,5 / 42 x 10,5	2

27.58.502.066**BPW Trailer Axle NHZF 9010-15 ECO Plus 2**

No.	Name	Code number	Dimension	Quantity
266	Lever (brake lining wear indicator)	03.190.14.07.1	85 mm	2
268	Lock nut	03.260.14.08.0	M 22 x 1,5 / H 15 / SW 32	2
270	Sealing ring	03.120.43.19.0	Ø 37 x 25	2
271	Sealing ring for brake camshaft with 3 or 4 as last digit of code number	03.120.42.09.0	Ø 42 x 15	2
272	Sealing ring for brake camshaft with 3 or 4 as last digit of code number	03.120.42.08.0	Ø 45 x 13,5	2
274	Circlip	03.350.30.02.0	Ø 49 x 9	2
279	Set of slack adjuster (ECO-Master) item 230, 232, 262, 266, 280, 285	05.574.82.87.3	Lever length (HL) 120 / 135 / 150 / 165 = Ø 14 / L 180 = Ø 11 / 250 = Ø 14	1
280	Slack adjuster (ECO-Master) incl. item 215, 283, 284	05.174.82.63.3	Lever length (HL) 120 / 135 / 150 / 165 = Ø 14 / L 180 = Ø 11 / 250 = Ø 14	2
283	Cap	03.211.90.15.0		2
284	Grease nipple	02.6850.01.02	AS 8 x 1	2
285	Shaped plate	03.165.25.28.0		2
295	Return spring	05.397.26.03.0	Ø 25,8 / 2,8 x 148 (185)	2
325	'C' Clip for brake with splitted roller	03.188.02.02.0	33 / 32,5 x 10	8
328	Repair kit brake SN 3020, with brake shoes item 329, 330	09.801.02.42.0	for brake with splitted roller	1
329	Repair kit brake SN 3015 / 3020, without brake shoes item 315, 325, 363, 364, 367, 368	09.801.02.47.0		1
330	Brake shoe assembly, with lining item 335, 350, 357	05.091.14.77.1	SN 3020	4
335	Brake shoe assembly, without lining incl. item 345 - 348	05.091.14.80.0	SN 3020	4
344	Repair kit brake shoe roller item 345 - 348	09.801.02.91.0	for brake with splitted roller	2
345	Roller	05.331.44.02.0	Ø 26 / 45 x 33,5	4
346	Bolt	03.084.75.24.0	Ø 26 x 58,5	4
348	Ring	03.310.70.15.0	Ø 24 / 31 x 3,5	8
350	Brake lining	03.092.14.45.0	18 mm	8
357	Rivet	02.5805.80.35	B 8 x 15	64
363	Return spring	05.397.34.17.0	Ø 20 / 3,6 x 180 (197)	2
367	Return spring (hook)	03.397.33.08.0	Ø 19 / 3,6 x 36 (40)	2
368	Return spring (eye)	03.397.33.09.0	Ø 19 / 3,6 x 36 (40)	2
380	Brake drum	03.109.46.07.0	Ø 300 x 200 / 260 / 190 / 10 x Ø 23 / 225 / 3 x 45°	2
416	Repair kit roller bearings with axle bolt and hub cap item 422, 430, 432, 437 - 460	09.801.07.33.0		2

27.58.502.066**BPW Trailer Axle NHZF 9010-15 ECO Plus 2**

No.	Name	Code number	Dimension	Quantity
419	Repair kit roller bearings without axle bolt and hub cap pos. 422, 430, 437, 438, 441, 459	09.801.07.34.0		2
422	Thrust ring ECO Seal	02.5664.74.00	Ø 117,5 / 158 x 12,5	2
430	Roller bearing	02.6410.23.00	33118	2
432	Grease cartridge	03.120.47.08.0	Ø 101 / 130 x 50	2
434	Repair kit hub bearing (cpl. hub) item 422 - 460, 560	09.801.08.03.0	with hub 03.272.44.46.0	2
435	Hub	03.272.44.46.0	Ø 137 / 120/150 / 175,5 / 10 x Ø 22 / 225	2
437	Locking ring	02.5606.58.90	Ø 158 x 4	2
438	Locking ring	02.5606.22.90	Ø 122 x 4	2
441	Roller bearing	02.6410.22.00	33213	2
446	Axle bolt with toothed washer incl. item 447	09.001.37.03.0	M 32 x 2 / SW 46	2
447	Hooked spring ring cpl. with locking piece item 448, 449	05.188.03.10.0		2
448	Hooked spring ring	03.188.03.09.0	Model no longer available.	2
449	Locking piece	03.277.10.01.0		2
459	O-ring	02.5678.65.00	Ø 128 x 3	2
460	Hub cap (bayonet) incl. item 459	05.212.25.78.0	Ø 137 / 142,6 x 56,3 / SW 120 / BPW	2
472	Wheel stud (helical fit wheel stud)	03.296.33.12.1	M 22 x 1,5 / 97 / 62	20
500	Set of dust cover assemblies item 501 - 504, 510, 513, 520	99.00.000.1.09	SN 3020 / □ 120 / 0°	1
501	Dust cover	03.010.99.87.0	Dust covers available as sets (upper + lower)	1
502	Dust cover	03.010.99.88.0	Dust covers available as sets (upper + lower)	1
503	Dust cover	03.010.99.85.0	Dust covers available as sets (upper + lower)	1
504	Dust cover	03.010.99.86.0	Dust covers available as sets (upper + lower)	1
510	Collar screw	02.5071.55.80	M 10 x 15 - 8.8 / SW 13	8
513	Sealing ring	02.5681.78.00	Ø 6 / 10 / 13 x 7	2
520	Plug	03.379.00.23.0		4
542	Sensor bracket	03.189.14.61.0	L = 19,5 mm	2
551	Locking screw	02.5071.23.00	M 8 x 20 - 10.9 / SW 13 / Torx Plus 40IP	2
560	Exciter ring	03.310.08.53.0	Ø 125 / 156 x 8,5 (80 Z)	2
564	Clamp	02.3507.32.00		2
565	Drive pin	02.6005.25.40	Ø 4 x 10	2
570	Sensor	02.3317.05.00		2
571	Bush for ABS	02.0316.59.00	Ø 16 / 18,4 x 31,5	2

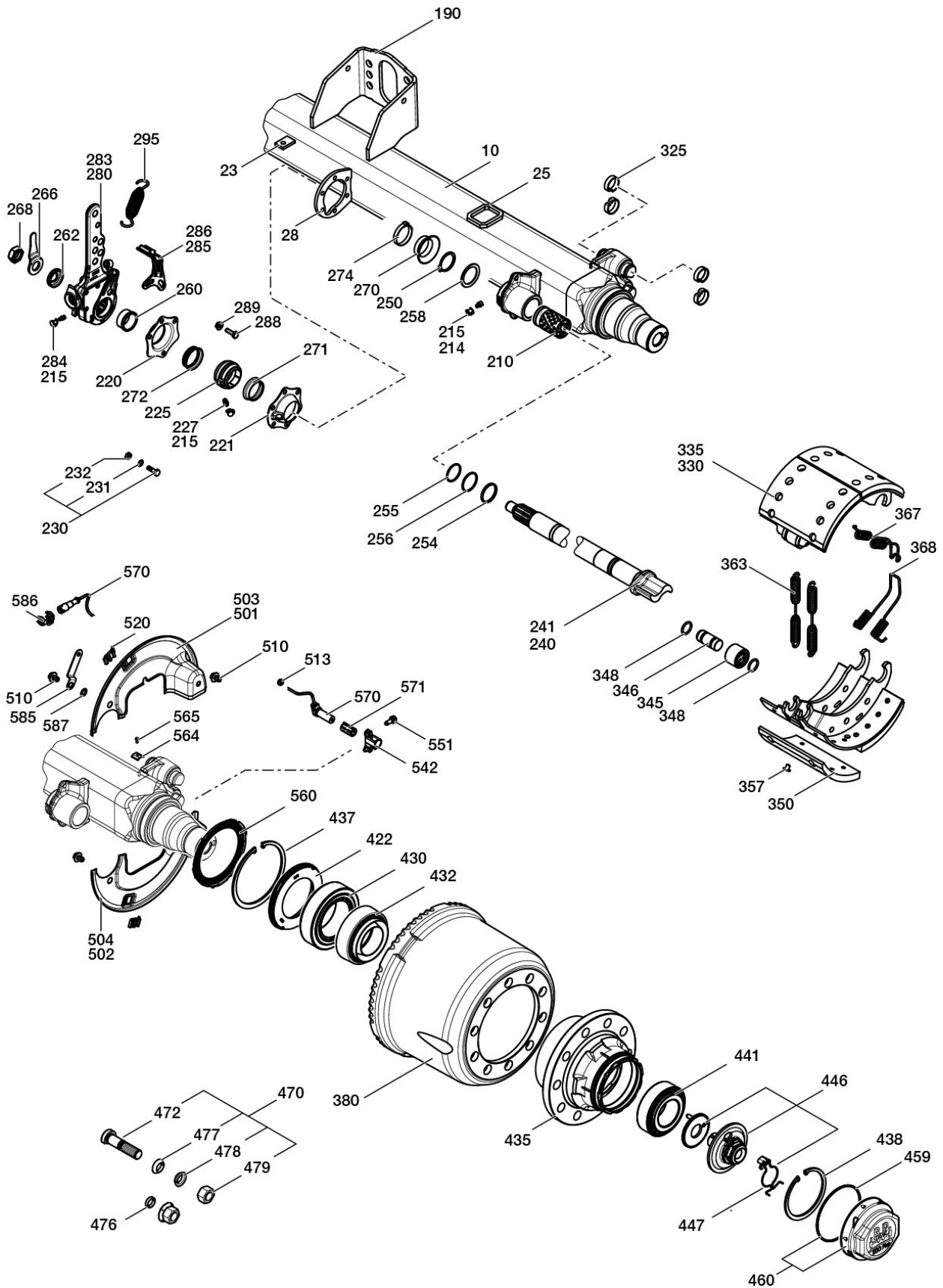
27.58.502.066

BPW Trailer Axle NHZF 9010-15 ECO Plus 2



No.	Name	Code number	Dimension	Quantity
585	Support	03.189.07.72.0		2
586	Retaining clip	02.1421.11.00		2
587	Serrated lock washer	02.5414.11.90	A 10,5	2
900	Special grease for ABS-sensors	02.1040.17.00		1

27.58.502.066 BPW Trailer Axle NHZF 9010-15 ECO Plus 2



27.58.502.066 BPW Trailer Axle NHZF 9010-15 ECO Plus 2



-2015 **AGS**

230	05.865.00.02.0	M 8 x 25 - 8.8 / SW 13
231	02.5403.08.92	B 8
232	02.5202.12.82	M 8 / SW 13
288	02.5025.30.82	M 8 x 25 - 8.8 / SW 13
289	02.5273.32.82	M 8 - 8 / SW 13

2016- **AGS**

230	05.865.00.02.0	M 8 x 30 - 8.8 / SW 13
232	02.5273.49.88	M 8 / SW 13

-2015 **GSK**

230	05.865.00.02.0	M 8 x 25 - 8.8 / SW 13
231	02.5403.08.92	B 8
232	02.5202.12.82	M 8 / SW 13

2016- **GSK**

230	05.865.00.02.0	M 8 x 30 - 8.8 / SW 13
232	02.5273.49.88	M 8 / SW 13