

# 25.50.744.354 BPW Trailer Axle HZF 12010-16 ECO Plus



( OR23 )

Brake SN 4220 ECO Drum

for ABS, with sensors

Track 1880 mm, spring seat centre 900 mm, booster bracket centre 251 mm

for TRISTOP-cylinder, AGS ECO-Master, lever length (HL) 120 - 165 / 250

max. connection type 30, lever length (HL) 165

welded on booster brackets, special version front

for push rod length 110 mm

Shock absorber centre 658 mm front

Brake drums 284 (279) mm wide

Wheel connection 280.8 / 335 / 10

Wheel studs M 22 x 1.5

without wheel nuts

No.	Name	Code number	Dimension	Quantity
10	Axle beam assembly	11.11.111110	only upon request	1
23	Plate	03.281.42.03.0		1
28	Support bearing plate	03.285.55.21.0		2
190	Booster bracket	03.182.15.35.0		2
209	Repair kit low-maintenance brake camshaft bearing item 210, 214, 220, 221, 225, 227, 230, 232, 245, 271, 272	09.801.06.09.2	with 03.229.02.18.0 / 03.229.02.19.0, for brake camshaft with 3 or 4 as last digit of code number	1
210	Bush	03.112.44.34.0	Ø 42 / 46 x 72,6	2
214	Grease nipple	02.6802.06.50	BM 10 x 1 / 45°	2
215	Cover	02.3505.20.00		6
220	Bearing box for brake camshaft with 3 or 4 as last digit of code number	03.229.02.18.0		2
221	Bearing box, for grease nipple for brake camshaft with 3 or 4 as last digit of code number	03.229.02.19.0		2
225	Spherical bearing for brake camshaft with 3 or 4 as last digit of code number	03.113.14.04.0	Ø 42 / 60 x 38	2
227	Grease nipple	02.6802.14.50	AM 8 x 1	2
230	Screw assembly incl. item 232	05.865.00.02.0	M 8 x 30 - 8.8 / SW 13	8
232	Lock nut	02.5273.49.88	M 8 - 8 / SW 13	8
240	Brake camshaft	05.097.05.39.4	557,5 / 678	1
241	Brake camshaft	05.097.05.40.4	557,5 / 678	1
245	Assembly kit item 250 - 262, 268, 270, 274	09.801.08.86.0		2
250	Locking ring	02.5676.01.00	A 42 x 2,5	4
252	Ring	03.310.12.24.0	Ø 42 / 46 / 55 x 7	2
255	O-ring	02.5677.37.42	Ø 37 x 2.6 ( black )	2
256	O-ring	02.5679.23.00	Ø 40 x 2.5 ( green )	2
258	Sealing ring	03.120.42.02.0	Ø 42 / 56 x 2/4	2
260	Bush for brake camshaft with 3 or 4 as last digit of code number	03.113.03.06.0	Ø 37,4 / 45 x 21,3	2

# 25.50.744.354 BPW Trailer Axle HZF 12010-16 ECO Plus



No.	Name	Code number	Dimension	Quantity
262	Washer	03.320.11.16.1	Ø 22,5 / 42 x 10,5	2
266	Lever ( brake lining wear indicator )	03.190.14.08.1	60 mm	2
268	Lock nut	03.260.14.08.0	M 22 x 1,5 / H 15 / SW 32	2
270	Sealing ring	03.120.43.19.0	Ø 37 x 25	2
271	Sealing ring for brake camshaft with 3 or 4 as last digit of code number	03.120.42.09.0	Ø 42 x 15	2
272	Sealing ring for brake camshaft with 3 or 4 as last digit of code number	03.120.42.08.0	Ø 45 x 13,5	2
274	Circlip	03.350.30.02.0	Ø 49 x 9	2
279	Set of slack adjuster (ECO-Master) item 230, 232, 262, 266, 280, 285, 286, 295	05.574.83.07.3	Lever length (HL) 120 / 135 / 150 / 165 = Ø 14 / L 180 = Ø 11 / 250 = Ø 14	1
280	Slack adjuster (ECO-Master) incl. item 215, 283, 284	05.174.83.05.3	Lever length (HL) 120 / 135 / 150 / 165 = Ø 14 / L 180 = Ø 11 / 250 = Ø 14	2
283	Cap	03.211.90.15.0		2
284	Grease nipple	02.6850.01.02	AS 8 x 1	2
285	Shaped plate for slack adjuster with 2 or 3 as last digit of code number	03.165.25.15.0	Alpha = 60 - 210°	1
286	Shaped plate for slack adjuster with 2 or 3 as last digit of code number	03.165.25.16.0	Alpha = 60 - 210°	1
295	Return spring	03.397.26.08.0	Ø 23,8 / 2,8 x 84 (132)	2
325	'C' Clip for brake with splitted roller	03.188.02.02.0	33 / 32,5 x 10	8
327	Repair kit brake SN 42.. (return springs / 'C' clip) item 325, 363, 367, 368	09.801.06.79.0		1
328	Repair kit brake SN 4220, with brake shoes item 327, 330	09.801.07.49.0	SN 4220 ECO Drum	1
330	Brake shoe assembly, with lining item 335, 350, 357	05.091.47.04.1	SN 4220 ECO Drum	4
335	Brake shoe assembly, without lining incl. item 345 - 348	05.091.47.09.0	SN 4220 ECO Drum	4
344	Repair kit brake shoe roller item 345 - 348	09.801.02.91.0	for brake with splitted roller	2
345	Roller	05.331.44.02.0	Ø 26 / 45 x 33,5	4
346	Bolt	03.084.75.24.0	Ø 26 x 58,5	4
348	Ring	03.310.70.15.0	Ø 24 / 31 x 3,5	8
350	Repair kit brake lining SN 4220 for one axle	09.801.07.45.0	18 mm	1
357	Rivet	02.5805.80.35	B 8 x 15	80
363	Return spring ECO Drum	05.397.58.03.0	Ø 34,5 / 5,5 x 274 (301)	2
367	Return spring (hook)	03.397.33.12.0	Ø 16,2 / 3,2 x 32 (36)	2
368	Return spring (eye)	03.397.33.13.0	Ø 16,2 / 3,2 x 32 (36)	2

# 25.50.744.354 BPW Trailer Axle HZF 12010-16 ECO Plus



No.	Name	Code number	Dimension	Quantity
380	Brake drum ECO Drum	03.109.77.43.0	Ø 420 x 200 / 284 / 290 / 10 x Ø 23 / 335	2
416	Repair kit ECO Plus hub bearing, 10 t item 420, 422, 430, 431, 432, 440, 441 (ECO Seal, from 1 / 05)	09.801.07.04.1		2
420	Thrust ring cpl. item 421, 424 (ECO Seal)	05.370.07.73.0		2
421	Thrust ring ECO Seal	03.370.07.72.0	Ø 96 / 117,5 / 132 x 22	2
422	Thrust ring ECO Seal	02.5664.74.00	Ø 117,5 / 158 x 12,5	2
424	O-ring	02.5678.00.00	Ø 100 x 3	2
430	Roller bearing	02.6410.23.00	33118	2
431	Dust cover (oil catcher)	03.010.93.34.0	Ø 94 / 148,5 x 8,5	2
432	Seal	03.120.45.16.0	Ø 67 / 93 x 90,5	2
434	Repair kit hub bearing ( cpl. hub ) item 420 - 449, 460, 560 (ECO Seal)	09.801.06.08.2	with hub 03.272.43.23.2	2
435	Hub ECO Seal	03.272.43.23.2	M 136 x 2,5 / Ø 120/150 / 280,8 / 10 x Ø 22 / 335	2
437	Locking ring	02.5606.58.90	Ø 158 x 4	2
438	Locking ring	02.5606.22.90	Ø 122 x 4	2
440	Thrust ring	03.370.26.24.0	Ø 71 / 108 x 8	2
441	Roller bearing	02.6410.22.00	33213	2
444	Axle nut assembly item 445, 446	09.266.47.11.0	M 52 x 2 / SW 95	2
445	Washer	03.320.64.01.0	Ø 53 / 76 x 5,8	2
445	Washer	03.320.65.05.0	Ø 53 / 83 x 5,8	2
446	Axle nut <b>Replaced by 05.266.47.11.0 + 03.320.65.05.0</b>	05.266.47.06.0	M 52 x 2 / SW 95 Model no longer available.	2
446	Axle nut	05.266.47.11.0	M 52 x 2 / SW 95	2
447	Hooked spring ring cpl. with locking piece item 448, 449	05.188.04.15.0		2
448	Hooked spring ring	03.188.04.10.0	Ø 62 x 1,8	2
449	Locking piece	03.277.00.07.0		2
460	Hub cap	03.212.25.31.0	M 136 x 2,5 / H 70 / SW 110 / BPW	2
472	Wheel stud ( helical fit wheel stud )	03.296.33.12.1	M 22 x 1,5 / 97 / 62	20
500	Set of dust cover assemblies item 501 - 504, 508, 510, 520	99.00.000.1.26	SN 4220 / □ 150 / 25°	1
501	Dust cover left upper	03.010.81.19.0	Dust covers available as sets ( upper + lower )	1
502	Dust cover left lower	03.010.81.20.0	Dust covers available as sets ( upper + lower )	1
503	Dust cover right upper	03.010.81.17.0	Dust covers available as sets ( upper + lower )	1

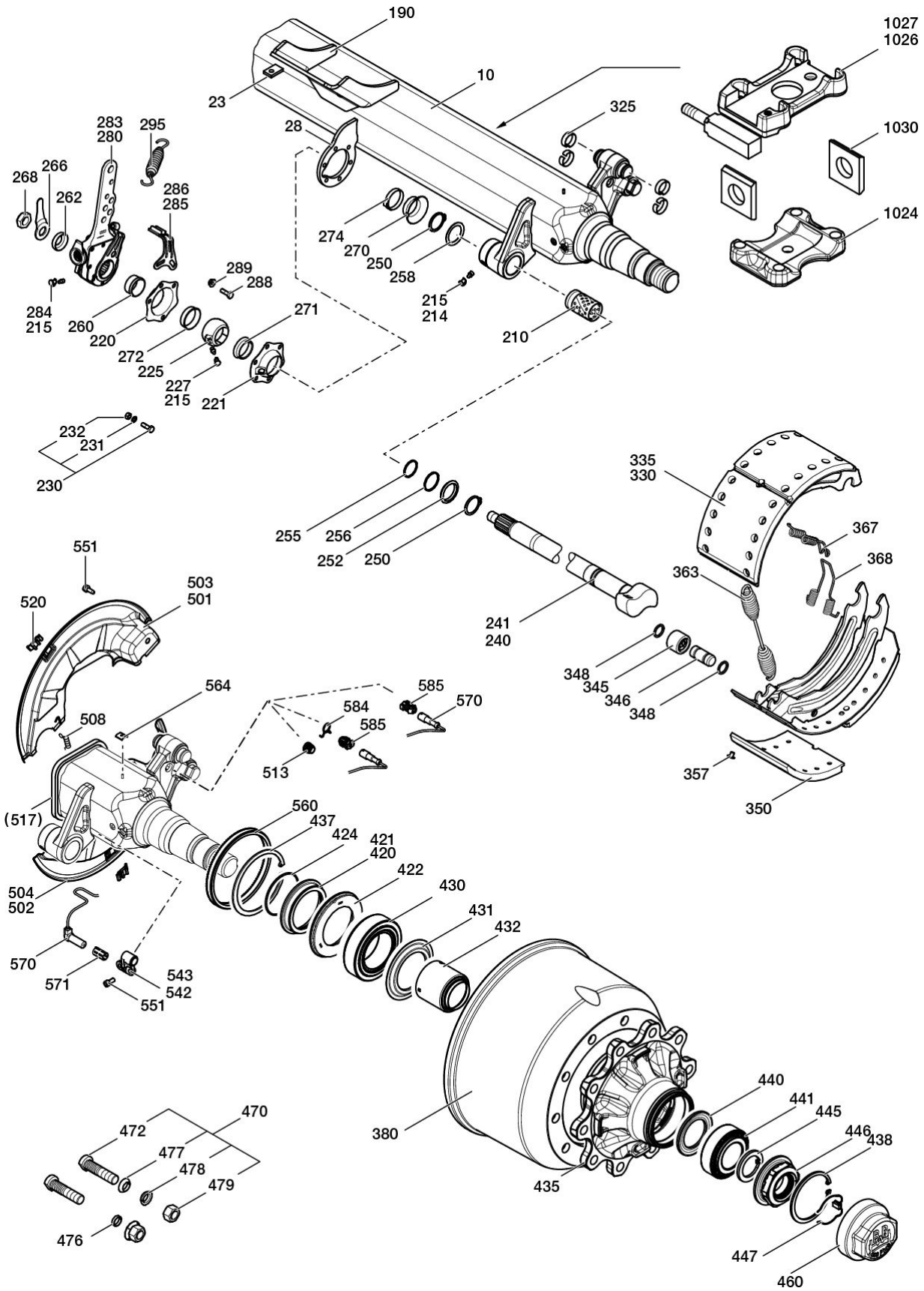
# 25.50.744.354

## BPW Trailer Axle HZF 12010-16 ECO Plus



No.	Name	Code number	Dimension	Quantity
504	Dust cover right lower	03.010.81.18.0	Dust covers available as sets ( upper + lower )	1
508	Return spring for dust cover	03.397.11.02.0	Ø 12,2 / 1,8 x 34 / 44	2
510	Collar screw	02.5071.55.80	M 10 x 15 - 8.8 / SW 13	4
520	Plug	03.379.00.23.0		4
542	Sensor bracket, right	03.189.07.58.0	L = 37,5 mm / H = 14 mm	1
543	Sensor bracket, left	03.189.07.59.0	L = 37,5 mm / H = 14 mm	1
551	Locking screw	02.5071.23.00	M 8 x 20 - 10.9 / SW 13 / Torx Plus 40IP	4
560	Exciter ring	03.310.08.14.0	Ø 176 / 194 x 15 (100 Z)	2
564	Clamp	02.3507.32.00		2
565	Drive pin	02.6005.25.40	Ø 4 x 10	2
570	Sensor	02.3317.05.00		2
571	Bush for ABS	02.0316.59.00	Ø 16 / 18,4 x 31,5	2
584	Hose clip	03.001.61.01.0	Ø 19 x 2	2
585	Retaining clip incl. item 584 ( Hose clip )	05.189.15.59.0		2
900	Special grease for ABS-sensors	02.1040.17.00		1
1024	Spring pad	03.032.19.26.0	125 / 180 / 230 / 175 / 40 / Ø 24	2
1026	Spring pad, right	05.032.11.40.0	125 / 180 / Ø 70 / Ø 26 / 75 / 150 / 93,5	1
1027	Spring pad, left	05.032.11.41.0	125 / 180 / Ø 70 / Ø 26 / 75 / 150 / 93,5	1
1030	Shaped part	03.001.35.10.0	108 x 88 x 15 / Ø 50	4

# 25.50.744.354 BPW Trailer Axle HZF 12010-16 ECO Plus



# 25.50.744.354 BPW Trailer Axle HZF 12010-16 ECO Plus



**-2015** **AGS**

230	05.865.00.02.0	M 8 x 25 - 8.8 / SW 13
231	02.5403.08.92	B 8
232	02.5202.12.82	M 8 / SW 13
288	02.5025.30.82	M 8 x 25 - 8.8 / SW 13
289	02.5273.32.82	M 8 - 8 / SW 13

**2016-** **AGS**

230	05.865.00.02.0	M 8 x 30 - 8.8 / SW 13
232	02.5273.49.88	M 8 / SW 13

**-2015** **GSK**

230	05.865.00.02.0	M 8 x 25 - 8.8 / SW 13
231	02.5403.08.92	B 8
232	02.5202.12.82	M 8 / SW 13

**2016-** **GSK**

230	05.865.00.02.0	M 8 x 30 - 8.8 / SW 13
232	02.5273.49.88	M 8 / SW 13