

# Schäffer Lader

## ***THE PERFORMANCE CLASS***

**460 T | 470 T | 6370 T**

**6390 T | 9310 T | 9330 T**

**9380 T**



**TELESCOPIC LOADERS:  
Performance re-defined**

## YARD LOADERS, WHEEL LOADERS AND TELESCOPIC LOADERS ...

from 14 kW (20 HP) to 132 kW (180 HP). At SCHÄFFER Loaders, we have a proud 50 year history of creating loaders for individual requirements. Our customers have made us what we are today: one of the world's most competitive and successful suppliers of yard loaders, wheel loaders and telescopic loaders. Every day our team creates new custom solutions that combine years of experience with a spirit of innovation. Our products set industry standards for reliability and durability, which means you save with lower servicing costs over the life of your vehicle. The Schaffer name is your assurance of superior performance, safety and comfort for years to come.

*made by SCHÄFFER*



# Schäffer Lader

When it comes to articulated telescopic loaders, SCHÄFFER machines are the most successful in their class. Precision performance on any terrain, with lifting heights and loads that you will not find in comparable machines from our competitors. The compact design, which is characteristic of all SCHÄFFER LOADERS, makes them a joy to use especially in hard-to-reach areas. Also due to the user-friendly controls, of course. The famous reliability of all SCHÄFFER LOADERS is also built-in. And not least of all: they look good, as well.

## SCHÄFFER TELESCOPIC LOADERS: THE FUTURE OF PERFORMANCE.

### THE PERFORMANCE CLASS

**460 T** | 44 kW (60 HP)

**470 T** | 51 kW (70 HP)

**6370 T** | 51 kW (70 HP)

**6390 T** | 63 kW (86 HP)

**9310 T** | 81 kW (110 HP)

**9330 T** | 96 kW (130 HP)

**9380 T** | 132 kW (180 HP)

The 460 T and 470 T models round off the lower range off SCHÄFFER telescopic loader. The operating weight is 4 t. These very compact and powerful loaders offer the same perfect all-round view as all SCHÄFFER loaders. The overall height of the machines is only 2210 mm.

With a lifting height of 4,25 m, these loaders are amongst the best in their class. Thanks to the latest engine technology from Kubota and specially designed SCHÄFFER axles with automatic differential locks, their output is also superior.

## TELESCOPING LOADERS 6370 T/6390 T: COMPACT MACHINES WITH EXCELLENT ALL ROUND VIEW

The new articulated telescoping loaders with an operating weight of 5 t covers at Schäffer the middle segment in telescoping loaders range. Unique selling points of these models are agility, suitability also for use in hard to reach areas, the new SCV cab and compact machine measurements. Just in case bigger Schäffer loaders of the 9300s series are out of question due to their dimensions, the 6300s come up to with their advantages. These machines are dedicated for use in narrow conditions, e.g. for use "under roof".

New SCV-Cab: ROPS and FOPS approved; very spacious, best ergonomics and all round view.

Kubota: World market leader of compact diesel motors. Clean, moneysaving, powerful.

Original SCHÄFFER planetary axles: very strong, high pushing power due to best setup of axle, hydrostatic drive and motor; payload of 7 t per axle; with automatic limited slip brakes. Oscillating rear axle for best stability.

Extremely strong articulation joint.

# Schäffer Lader



The articulation joint is really heavy duty.  
You will hardly find a stronger one.

## THE 6300 SERIES OF SCHÄFFER: ADVANTAGES AT A GLANCE

Low boom pivot for perfect view.

Sliding elements free of wear.

Tilt cylinder well protected  
in telescopic boom.

Very strong carriage,  
fast and safe hydraulic  
coupling of tools.

CAD optimized lifting arm,  
best lifting height and reach,  
perfect parallel lift.

Versatile due to big range of tools  
and optional equipment.



## TELESCOPIC LOADER 9310 T / 9330 T FROM SCHÄFFER: THE LOADER WITH ADDED VALUE

Here are only five features that make these loaders added-value machines:

1. The driver has an excellent all-round view due to the low boom pivot and a new designed SCV cab. The driver can always see clearly in all directions.
2. The lifting height of 5.10 meters is unique in the 6-ton class. With SCHÄFFER you can reach higher and farther.
3. The oscillating rear axle contributes to the excellent stability of the loader. Good for your safety and for use on rough terrain.
4. The tilt cylinder is protected within the telescoping arm, which also protects your pocketbook on the long run.
5. The sliding elements in the telescoping arm were made of Ferroform, a special material without any wear.

The 9310 T/9330 T are our most popular telescopic loaders.  
And for more than just five reasons.

# Schäffer Lader



The new watercooled TCD 2012 4-cylinder engines from Deutz. You can be sure that the engines are extremely reliably even under difficult conditions.

The technical data is convincing: one litre displacement per cylinder, excellent torque increase, specific fuel consumption of approximately 200 g/kWh, quiet and clean.




Oscillating axle in rear for more stability and higher excavating force.

## SCHÄFFER LOADER WITH NEW CAB "SCV"

The new SCHÄFFER SCV-cab (Silence/Comfort/View) with which the 6300 and 9300 series telescoping loaders are equipped, offers more comfort for long working days. Already from the outside the new cabin shows dynamism and power. You can really enjoy climbing due to the safe steps and the largely dimensioned doors. The interior design in friendly colors conforms to the demand for high quality standards which is typical for SCHÄFFER.

The seat in its standard version already offers real comfort and setting options. If desired an air spring seat is also available. The steering-wheel is adjustable in height and inclination. All operating elements and displays are arranged clearly and logically. All work hydraulics can be dosed absolutely delicately by means of a joystick. This is supported by the use of pre-controlled valves. Arm-rest and joystick form a unit with the seat and accept all movements of the seat. Pure ergonomics! All drivers will like the rear window of the SCV-cab which can be opened to have a better circulation of air.



The powerful three-stage fan ensures always perfect view. 7 air nozzles!

## AS STANDARD ON SCV CAB



Perfect view upwards.  
With roller blind



Box with cover  
(9300 series only)



Battery switch



Power plug



Bottle holder



2 x Dual Power working lamp front,  
1 x Single Power rear

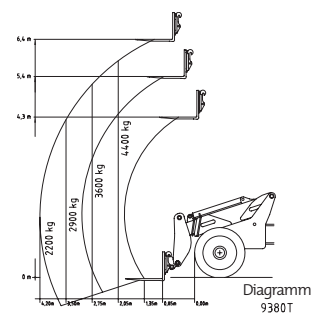
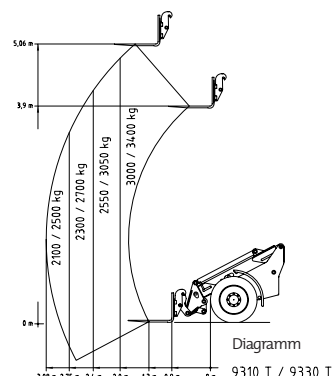
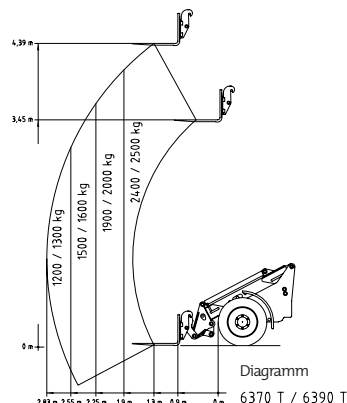
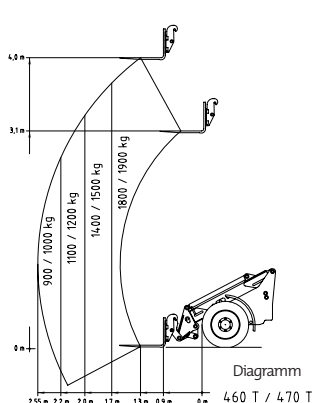


Arm-rest and joystick form a unit with the seat and accept all movements of the seat. Pure ergonomics!

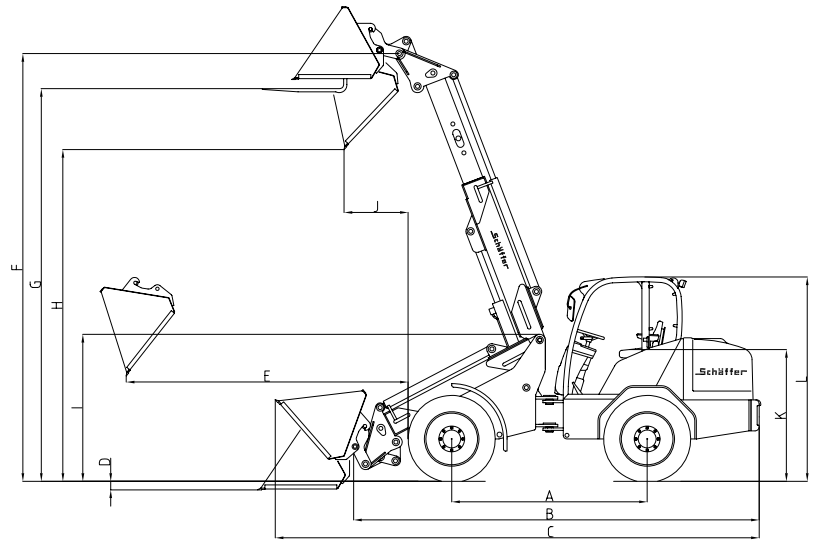
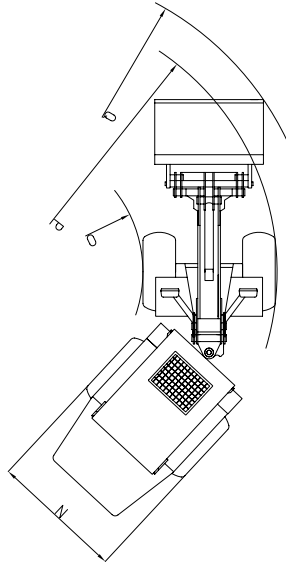
# TECHNICAL DATA

	460 T /470 T	6370 T	6390 T	9310 T	9330 T	9380 T
<b>Engine</b>	4 Cyl. Kubota Turbo 44 kW (60 HP)    4 Cyl. Kubota 51 kW (70 HP)	4 Cyl. Kubota 51 kW (70 HP)	4 Cyl. Kubota Turbo 63 kW (86 HP)	4 Cyl. Deutz Turbo 81 kW (110 HP)	4 Cyl. Deutz Turbo Intercooler 96 kW (130 HP)	4 Cyl. Deutz Turbo Intercooler 132 kW (180 HP)
<b>Driving hydraulics</b>	hydrostatic- automotive	hydrostatic- automotive	hydrostatic- automotive	hydrostatic- automotive	hydrostatic- automotive	hydrostatic- automotive
<b>Tyres</b>	15.0/55 - 17 AS Option I 425/55 R17	15.0/55 - 17 AS Option I 425/55 R17 Option II 500/45-20	425/55 R17 Option I 500/45-20 Option II 15.5/55R18	405/70-20 Option I 365/70-R18 Option II 550/45-22.5	600/40-22.5	650/55R26.5
<b>Service brake</b>	Combination Hydrostatic and multiple-disk	Combination Hydrostatic and multiple-disk	Combination Hydrostatic and multiple-disk	Combination Hydrostatic and multiple-disk	Combination Hydrostatic and multiple-disk	Combination Hydrostatic and multiple-disk
<b>Parking brake</b>	Multiple Disk in Oil Bath	Multiple Disk in Oil Bath	Multiple Disk in Oil Bath	Multiple Disk in Oil Bath	Multiple Disk in Oil Bath	Multiple Disk in Oil Bath
<b>Working hydraulics</b>	Flow Rate: 70 l/min Working Pressure: 220 bar	Flow Rate: 70 l/min Working Pressure: 220 bar	Flow Rate: 70 l/min Working Pressure: 220 bar	Flow Rate: 80 l/min Working Pressure: 220 bar	Flow Rate: 85 l/min Working Pressure: 220 bar	Flow Rate: 180 l/min Working Pressure: 220 bar
<b>Steering</b>	Fully Hydraulic Articulated Steering	Fully Hydraulic Articulated Steering	Fully Hydraulic Articulated Steering	Fully Hydraulic Articulated Steering	Fully Hydraulic Articulated Steering	Fully Hydraulic Articulated Steering
<b>Lifting capacity</b>	1.950 kg	2.800 kg	2.800 kg	3.800 kg	4.200 kg	4.900 kg
<b>Tip-over load, straight</b>	1.800 kg*/1.900 kg*	2.400 kg*	2.500 kg*	3.000 kg*	3.400 kg*	4.400 kg*
<b>Axles</b>	Original SCHÄFFER axles, 6 wheel nut rim; planetary axle and automatic limited slip brake, Oscilating rear axle	Original SCHÄFFER axles, 6 wheel nut rim; planetary axle and automatic limited slip brake, Oscilating rear axle	Original SCHÄFFER axles, 6 wheel nut rim; planetary axle and automatic limited slip brake, Oscilating rear axle	ZF-Axles, 8 wheel nut rim; planetary axle and automatic limited slip brake, Oscilating rear axle	ZF-Axles, 8 wheel nut rim; planetary axle and automatic limited slip brake, Oscilating rear axle	Dana-Axles, 10 wheel nut rim; planetary axle and automatic limited slip brake, Oscilating rear axle
<b>Operating Weight</b>	canopy: 3.950 kg cab: 4.150 kg	canopy: 4.670 kg cab: 4.820 kg	canopy: 4.750 kg cab: 4.900 kg	cab: 6.000 kg	cab: 6.600 kg	cab: 11.000 kg
<b>Speed</b>	0 – 20 km/h, 2 speeds gear switching under load possible Option: 0 – 30 km/h	0 – 20 km/h, 2 speeds gear switching under load possible Option: 0 – 30 km/h	0 – 20 km/h, 2 speeds gear switching under load possible Option: 0 – 30 km/h	0 – 20 km/h, 2 speeds gear switching under load possible Option: 0 – 35 km/h	0 – 20 km/h, 2 speeds gear switching under load possible Option: 0 – 35 km/h	0 – 40 km/h, 3 speeds ranges
<b>Electrical system</b>	Operating Voltage 12 V	Operating Voltage 12 V	Operating Voltage 12 V	Operating Voltage 12 V	Operating Voltage 12 V	Operating Voltage 12 V
<b>Fluid capacities</b>	Fuel: 60 l Hydraulic oil: 60 l	Fuel: 65 l Hydraulic oil: 60 l	Fuel: 75 l Hydraulic oil: 70 l	Fuel: 95 l Hydraulic oil: 85 l	Fuel: 105 l Hydraulic oil: 95 l	Fuel: 165 l Hydraulic oil: 155 l

\*see diagramm



## DIMENSIONS



			460 T/470 T	6370 T	6390 T	9310 T	9330 T	9380 T
<b>A</b>	Axle base	[mm]	1.720	2.240	2.240	2.480	2.480	2.935
<b>B</b>	Chassis length	[mm]	4.190	4.950	4.950	5.250	5.250	6.900
<b>C</b>	Total length with standard bucket	[mm]	4.990	5.580	5.580	6.040	6.040	7.380
<b>D</b>	Excavating depth	[mm]	180	150	150	190	190	140
<b>E</b>	Reichweite	[mm]	1.640	2.300	2.300	2.900	2.900	3.850
<b>F</b>	Max. bucket pivot point	[mm]	4.250	4.660/5.100*	4.660/5.100*	5.100	5.100	6.900
<b>G</b>	Max. loading height with pallet fork	[mm]	4.020	4.390	4.390	5.060	5.060	6.420
<b>H</b>	Max. load over height	[mm]	3.340	3.530	3.530	4.190	4.190	5.350
<b>I</b>	Max. dump height	[mm]	1.580	1.660	1.660	1.780	1.780	2.287
<b>J</b>	Dump range	[mm]	1.160	970	970	730	730	1.170
<b>K</b>	Seat height	[mm]	1.290	1.340	1.340	1.510	1.510	2.040
<b>L</b>	Cab/Hardtop height	[mm]	2.210	2.320	2.320	2.500	2.500	2.850
<b>N</b>	Total width	[mm]	1.370 - 1.600	1.570 - 1.800	1.570 - 1.800	1.800 - 2.080	2.110	2.400
<b>O</b>	Track arc inside	[mm]	1.410	1.750	1.750	2.050	1.990	2.570
<b>P</b>	Track arc outside	[mm]	3.310	3.925	3.925	3.900	4.100	5.000
<b>Q</b>	External radius with standard bucket	[mm]	3.820	4.530	4.530	3.650	3.650	5.500

\* Option: High lift





The way SCHÄFFER loaders are developed, built and serviced is unique. The difference is our 50 years of experience. First, we think about the operator; we want to make his work safer, more comfortable – and more profitable. To this end, we are equipped with the most modern development and production technologies at our plant in Erwitte, Germany. Ultimately, it is our associates who work with our customers to continuously develop new solutions. Long years of commitment to the company combined with an enduring spirit of innovation are the basis of our exceptional worldwide success.

The name SCHÄFFER Loaders stands for more than one-of-a-kind product quality. It also stands for safety and optimal service, which we guarantee not only in Germany but around the globe.

The purchase of a SCHÄFFER loader is the beginning of a long-term relationship. Only original replacement parts allow your machine to remain a 100% true SCHÄFFER over the years. Only then will it guarantee the reliability you rightly expect. We offer you and our service partners a 24 hour delivery service – 7 days a week, 365 days a year.

*made by SCHÄFFER*

SCHÄFFER offers you a product line-up of over 40 different models, each of which can be adapted to your individual requirements. Our loaders can be used in many different industries: in agriculture or construction, in horticulture or landscaping, in industry and trade, in horse husbandry or warehousing. Whatever the industry, SCHÄFFER is always your first choice.



Your Dealer:

# Schaeffer Lader

SCHÄFFER MASCHINENFABRIK GMBH  
Postfach 10 67 | D-59591 Erwitte  
Phone +49 02943 9709-0  
Fax +49 02943 9709-50  
info@schaeffler-lader.de  
www.schaeffler-lader.de